



Fukuoka

HILTON FUKUOKA SEA HAWK

HILTON FUKUOKA SEA HAWK

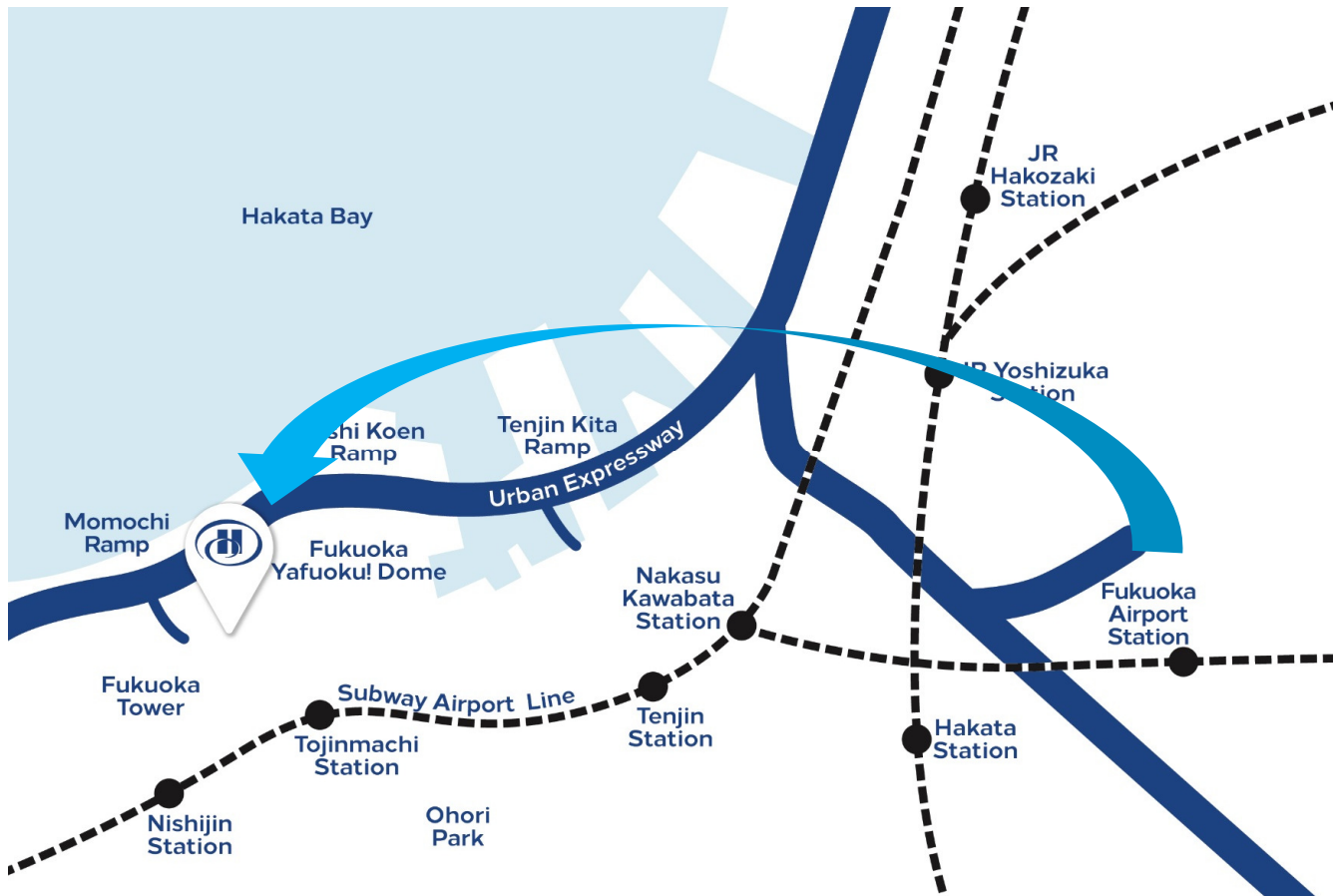
Location - Fukuoka

ACCESS TO FUKUOKA GATEWAY TO ASIA



Fukuoka city is located in the **Heart** of East Asia. Several business hubs located within a short flight distance.

LOCATION #1 EASY ACCESS



We are only **15 mins** to:
Hakata Station
Fukuoka Airport
Downtown Tenjin

HUB LOCATION EASY ACCESS



Landmark	Distance	By Car	By Bus
Fukuoka Tower	800m	3 mins	8 mins
Nishijin	1.3 km	5 mins	15 mins
Tenjin	3.9 km	15 mins	20 mins
Nakasu	4.8 km	18 mins	30 mins
Hakata station	8.7 km	25 mins	33 mins
Fukuoka International Airport	10.5km	20 mins	40 mins

BUS STOP ALL UNDER THE ROOF



Hilton Fukuoka Sea Hawk Bus Station



Airport Shuttle Bus Stop



Open Top Bus Stop



Local City Bus

SURROUNDING AREA **SAFE NEIGHBORHOOD**



- Beaches & Parks
- Bars/Restaurants
- Hospitals (multilingual)
- Fire Stations
- Police Station
- Consulates

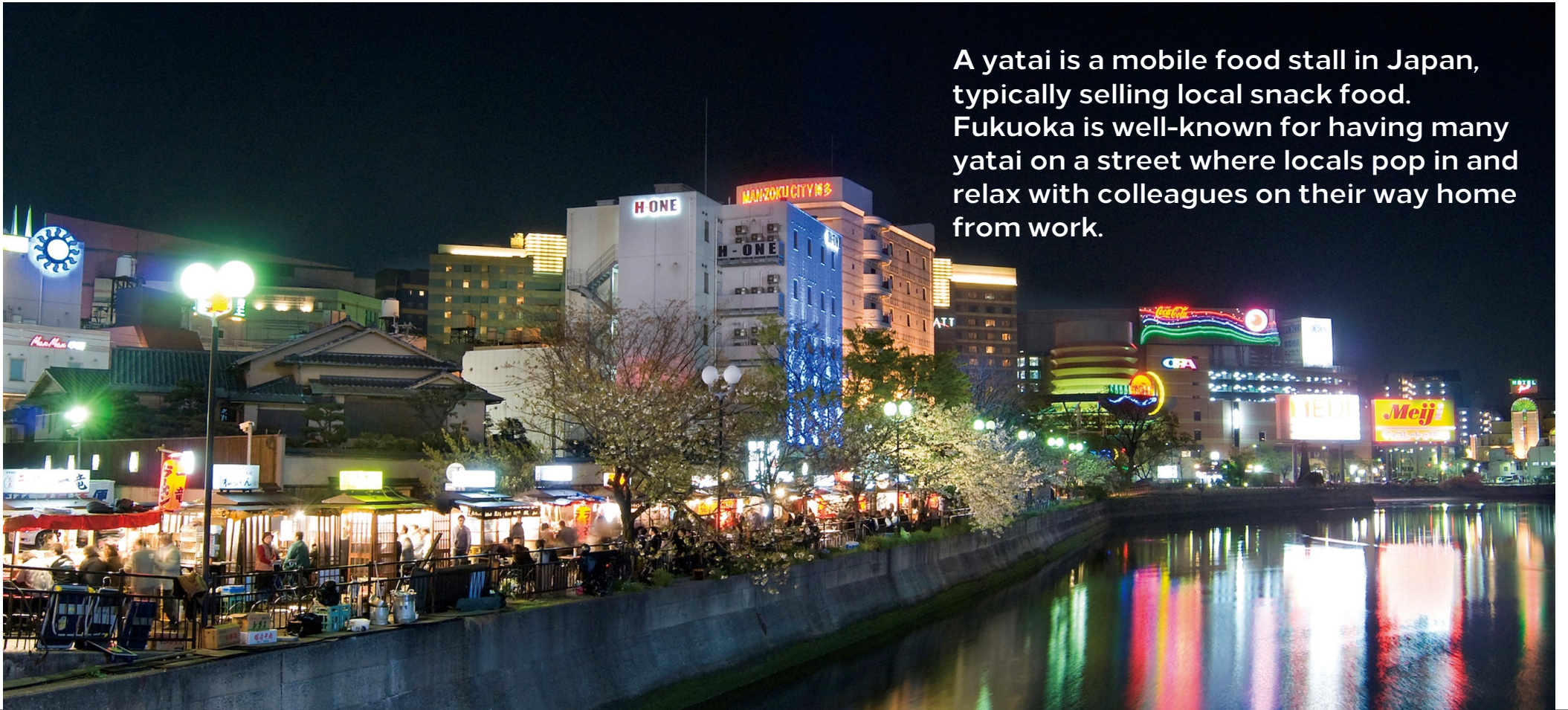
All within walking distance

HILTON FUKUOKA SEA HAWK

Fukuoka at a Glance

GOURMET CITY FUKUOKA

YATAI FOOD STALLS



A yatai is a mobile food stall in Japan, typically selling local snack food. Fukuoka is well-known for having many yatai on a street where locals pop in and relax with colleagues on their way home from work.

GOURMET CITY FUKUOKA

LOCAL DELICACY



Mizutaki
Chicken Hot Pot



Hakata Ramen
Pork Noodle Soup



Unagi
Charcoal Grilled
Freshwater Eel



Sushi



Finest Wagyu
Beef

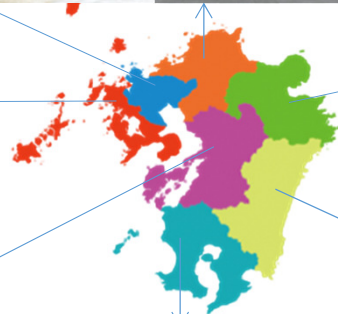
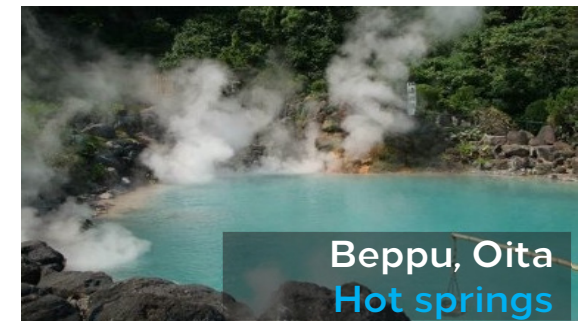


Gyoza
Pan-fried
Dumplings

HILTON FUKUOKA SEA HAWK

Beyond Fukuoka

BEYOND FUKUOKA KYUSHU ISLAND



HILTON FUKUOKA SEA HAWK

Guestrooms

GUESTROOM STUNNING VIEW



Total 1,053

As of April, 2020

- Hilton rooms: 382
- Deluxe rooms: 56
- Twin Hilton High Floor: 288
- Hilton Premium: 195
- Executive rooms: 64
- Panoramic suites: 22
- Other suites: 46

HILTON ROOM SIMPLE AND COMFORTABLE



EXECUTIVE ROOM LUXURY



Executive King
Floor: 30-33
Max. Pax: 2
Room size: 27-31m²
Bed size: 180cm

EXECUTIVE PANPRAMIC BAY SUITE

ULTIMATE LUXURY

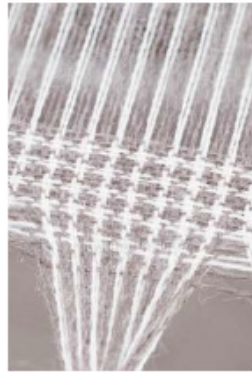


Executive Panoramic
Bay Suite
Floor: 32,33
Max. Pax: 2
Room size: 128m²
Bed size: 160cm

HILTON FUKUOKA SEA HAWK

Hotel Renovations

NEW CONCEPT RENOVATED ROOM



交わり
Relation

+



船
ship

×



白砂青松
white sand and blue pines

=

Hilton
Fukuoka
Sea Hawk
Original



TWIN HILTON PREMIUM LUXURY CRUISE SHIP



Twin Hilton Premium
Floor: 26-29
Max. Pax: 3
Room size: 35-42m²
Bed size: 105cm

TWIN HILTON HIGH FLOOR CRUISE SHIP



Twin Hilton High Floor
Floor: 26-29
Max. Pax: 2
Room size: 24-31m²
Bed size: 105cm

NEW CORRIDOR



HILTON FUKUOKA SEA HAWK

Event Spaces

EVENT HOSTING A SUCCESSFUL EVENT



37 function rooms
Up to 3,500 guests
in our largest
convention hall

CAPACITY CHART

GRAND BALL ROOM & MID-SIZED ROOM

Name	Location	Area (m ²)	Height (m)	Width (m)	Depth (m)	Banquet	Buffet	Classroom	Theatre
Convention / Grand Ballroom / Foyer	1st Floor	4,114	–	–	–	–	3,500	–	–
Argos (Total size)	1st Floor	2,440	8.0	85.0	28.7	1,200	2,000	1,800	3,200
Argos (5/6 size)	1st Floor	2,043	8.0	71.2	28.7	1,000	1,600	1,500	2,600
Argos (4/6 size)	1st Floor	1,650	8.0	57.5	28.7	800	1,000	1,100	2,100
Argos (3/6 size)	1st Floor	1,214	8.0	42.4	28.7	600	700	800	1,400
Argos (2/6 size)	1st Floor	795	8.0	27.7	28.7	400	450	500	900
Argos (1/6 size)	1st Floor	408	8.0	14.2	28.7	180	250	250	350
Navis (Total size)	1st Floor	777	5.0	41.5	18.6	300	400	400	800
Navis (2/3 size)	1st Floor	517	5.0	27.8	18.6	200	250	250	500
Navis (1/3 size)	1st Floor	253	5.0	13.6	18.6	90	100	100	200
Vega	3rd Floor	284	3.0	12.8	22.2	100	100	100	220
Rigel	3rd Floor	243	3.0	12.8	19.0	80	80	90	200
Boardroom	3rd Floor	183	3.0	10.1	18.1	60	80	60	130
Olive	5th Floor	474	3.5	24.3	17.8	180	250	200	360
Tower Penthouse	34th Floor	181	3.1	19.8	9.7	90	120	80	150
Bay Penthouse	34th Floor	163	3.1	21.2	8.0	72	100	60	120
Ocean Penthouse	34th Floor	119	3.1	15.8	6.8	40	50	20	20
Ocean Lounge	34th Floor	250	–	–	–	–	–	–	–

CAPACITY CHART

MULTI-PURPOSE ROOM

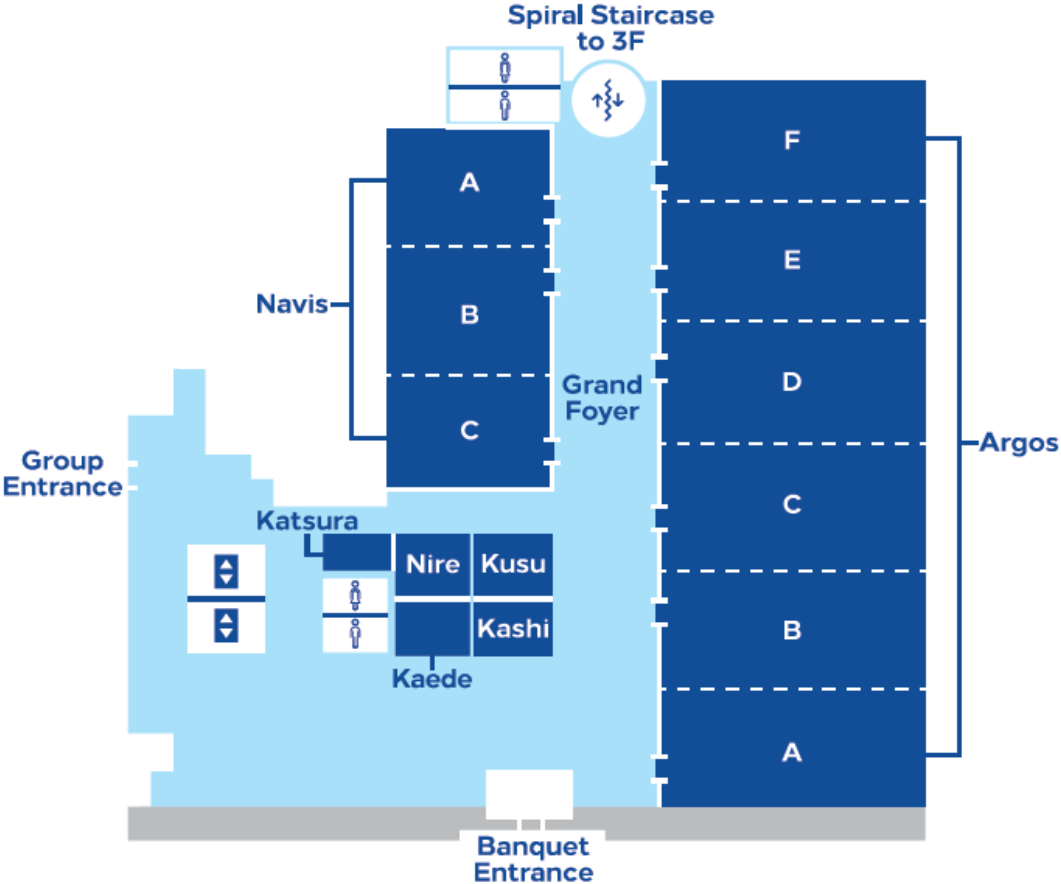
Name	Location	Area (m ²)	Height (m)	Width (m)	Depth (m)	Banquet	Buffet	Classroom	Theatre
Nire / Kaede / Kusu / Kashi	1st Floor	53	4.0	7.1	7.5	20	30	20	60
Katsura	1st Floor	46	4.0	8.3	4.5	-	-	-	-
Kiku / Ran	3rd Floor	65	2.7	9.3	7.0	30	40	30	60
Kei / Yoh / Koh / Sumire / Sakura	3rd Floor	62	2.7	8.8	7.0	30	40	30	60
Hishi	3rd Floor	61	2.7	10.2	6.0	-	-	-	-
Aoi	3rd Floor	48	2.7	9.2	5.2	-	-	-	-
Akane / Anzu / Hagi / Fuji	3rd Floor	30	2.7	4.3	7.0	10	-	15	25
Sage	5th Floor	80	3.8	10.0	9.0	-	-	-	-
Sol	34th Floor	39	3.1	8.4	4.6	18	-	-	-
Luna	34th Floor	30	3.1	8.5	3.5	12	-	-	-

EVENT SPACE

1st FLOOR

FLOOR MAP KEY

- Meeting/Conference Rooms
- Amenities
- Public Space
- Private

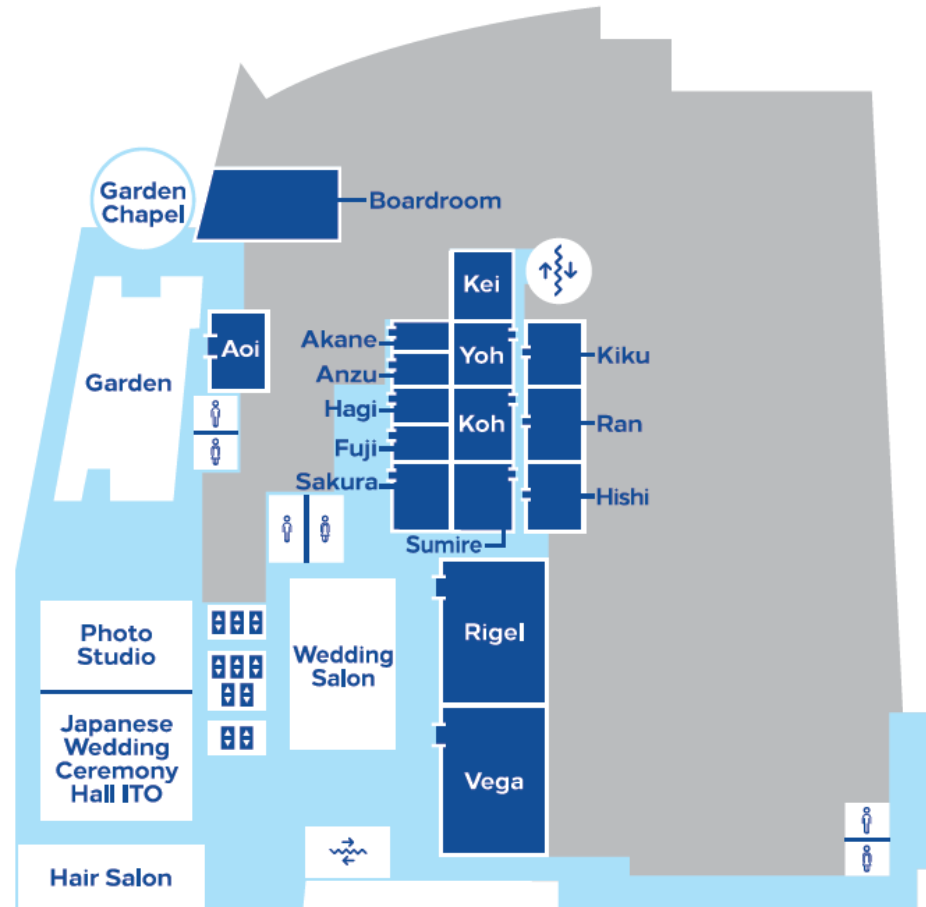


EVENT SPACE

3rd FLOOR

FLOOR MAP KEY

- Meeting/Conference Rooms
- Amenities
- Public Space
- Private

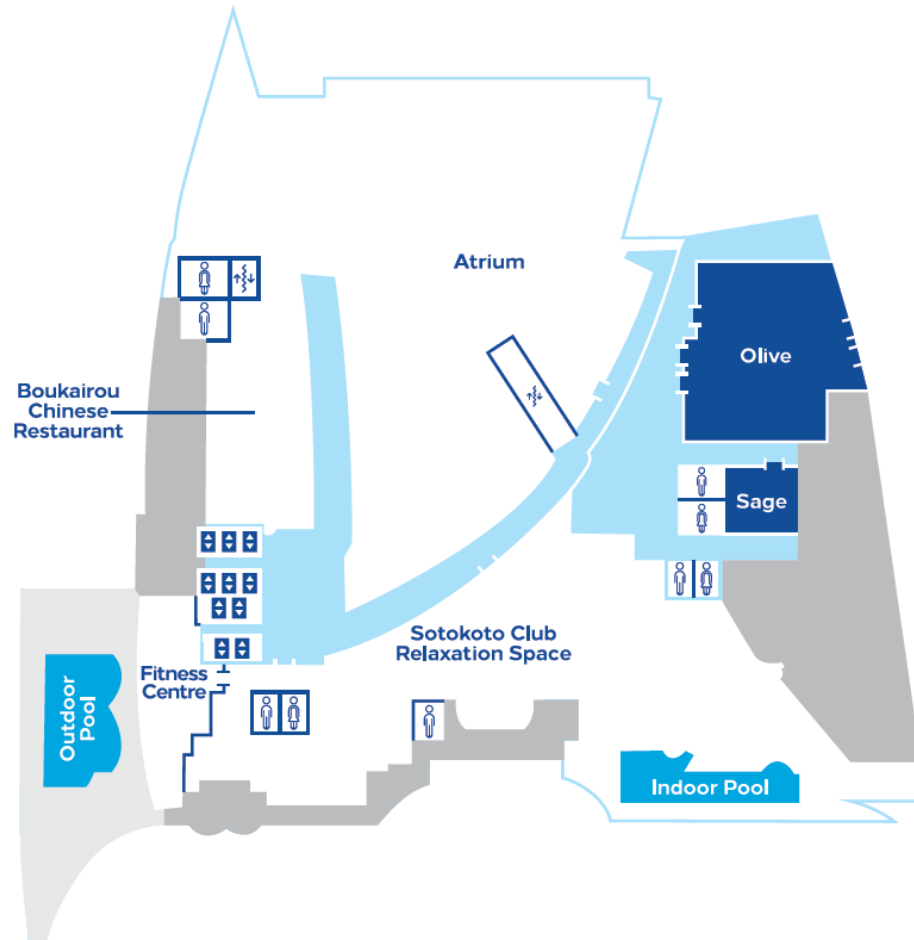


EVENT SPACE

5th FLOOR

FLOOR MAP KEY

- Meeting/Conference Rooms
- Amenities
- Public Space
- Private
- Outdoor Space

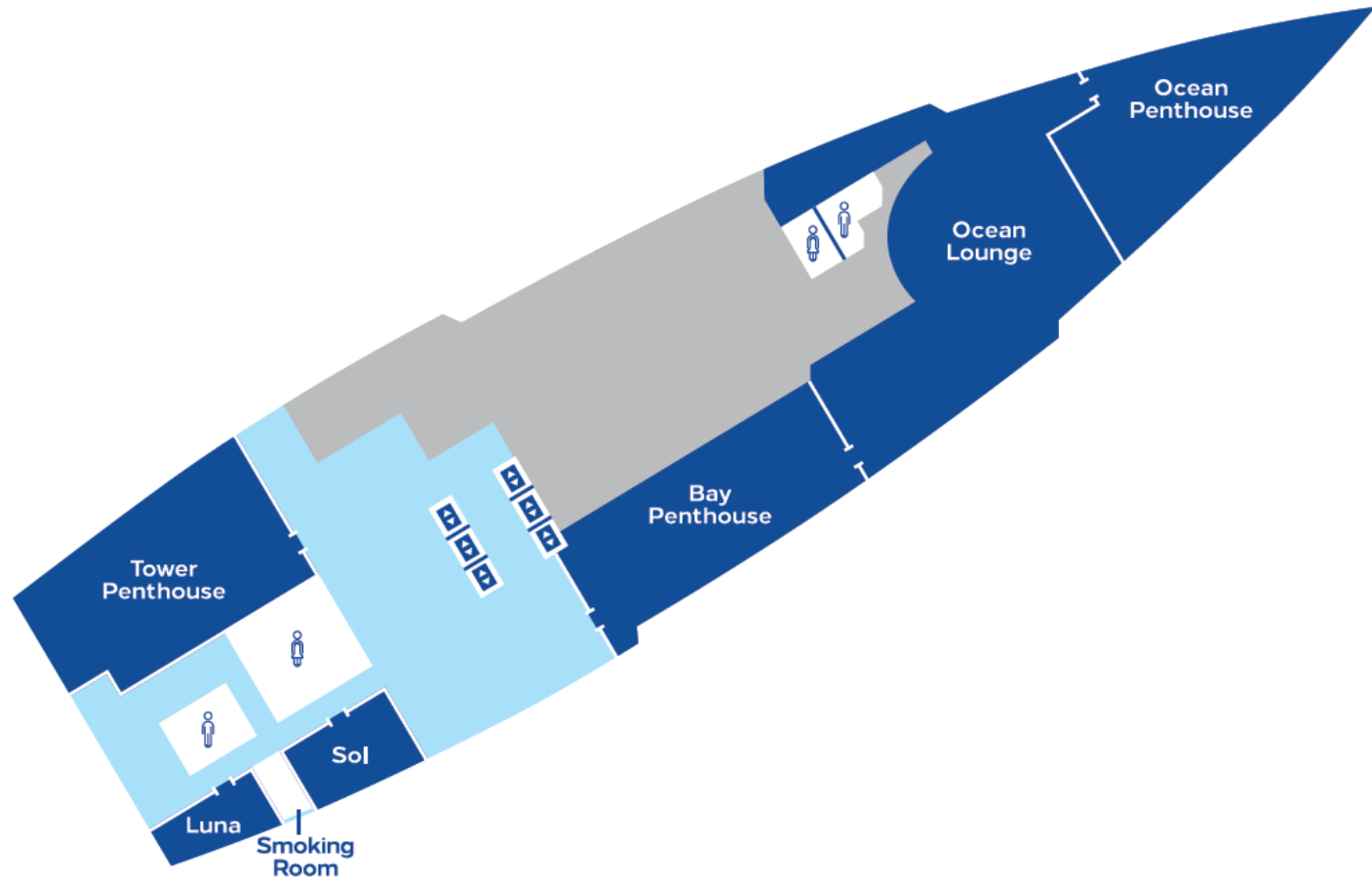


EVENT SPACE

34th FLOOR

FLOOR MAP KEY

- Meeting/Conference Rooms
- Amenities
- Public Space
- Private



GRAND BALLROOM ARGOS



Argos

Floor: 1
Max. Pax: 1,500 for dinner
3,500 for theater
Room size: 2,440 sqm
Ceiling height: 8.0m

TRACK RECORD OF INTERNATIONAL MICE EVENTS



**66th International
Communication Association**
June, 2016
2,500 delegates

TRACK RECORD OF INTERNATIONAL MICE EVENTS



**99th Lions Clubs International
Convention**

June, 2016

38,000 delegates

TRACK RECORD OF INTERNATIONAL MICE EVENTS



America's Cup World
Series

November, 2016
6,000 delegates

TRACK RECORD OF INTERNATIONAL MICE EVENTS

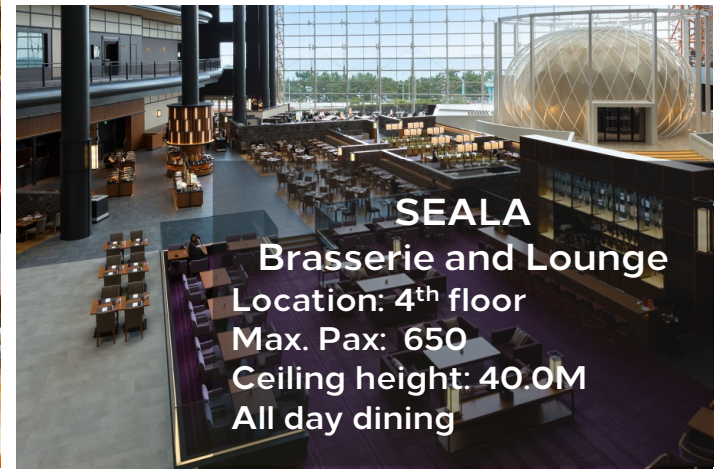


G20
Finance Ministers and Central
Bank Governors Meeting
June, 2019

HILTON FUKUOKA SEA HAWK

Food & Beverage Outlets

BRASSERIE-INSPIRED DINING SPACIOUS AND BRIGHT



SEALA
Brasserie and Lounge
Location: 4th floor
Max. Pax: 650
Ceiling height: 40.0M
All day dining

VARIETY DINING OPTIONS TRADITIONAL AND CONTEMPORARY



BOUKAIROU
Chinese Restaurant
Location : 5th floor
Capacity: 100 guests

KINYOHTEI
Teppanyaki
Location : 35th floor
Capacity: 32 guests

TOMOZUNA
Sushi Restaurant
Location : 35th floor
Capacity: 48 guests

CLOUDS
Bar & Dining
Location: 35th floor
Capacity: 80 guests

HILTON FUKUOKA SEA HAWK

Exclusive activities

PERSONALIZED EXPERIENCE



BRANDING OPTIONS



BRANDING HOTEL WINDOW LIGHT-UP



HILTON FUKUOKA SEA HAWK

Shopping Zone

SHOPPING ZONE SEA HAWK GALLERIA



The newly-redesigned **Seahawk Galleria** shopping arcade, located on the premises of the hotel including several gift shops, a **24 hr** Convenience store, a duty free shop, an game center & pharmacy.

SHOPPING ZONE LARGE SHOPPING COMPLEX NEXT DOOR



Mark Is Fukuoka Momochi

Opened in November 2018

166 shops & dining options

KEY CONTACTS

HILTON FUKUOKA SEA HAWK

POSITION	NAME	NUMBER	EMAIL
INTERNATIONAL SALES TEAM	Kwanyoung Kim (English, Korean, Japanese)		kwanyoung.kim@hilton.com
	Ai Asakura (English, Japanese)	+81 (0)92 844 7901	ai.asakura@hilton.com
	Tienyi Yu (Mandarin, Japanese)		tienyi.yu@Hilton.com

PROPERTY ADDRESS:

2-2-3 Jigyohama, Chuo-ku, Fukuoka city, Fukuoka,
810-8650 Japan
